

LED SURFACE MOUNTED LUMINAIRE

INSTRUCTION MANUAL



SUPERPROOF PRO

LL17H08, LL17H22

LL17J10, LL17J24



IP67 IK10

IMPORTANT SAFEGUARDS



PLEASE READ CAREFULLY AND FOLLOW ALL INSTRUCTIONS FOR YOUR OWN SAFETY.

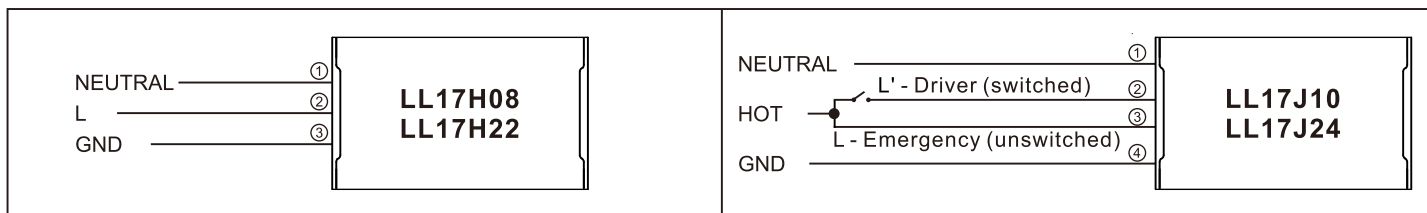
! WARNING - To reduce the risk of fire, electric shock, product failure or serious personal injury, When using the luminaire, the following important information and safety precaution should be followed at all times:

1. An AC power of 100-277V for LED light without battery backup (LL17H08, LL17H22) and an unswitched AC power of 100V-277V is required for the LED light with battery backup (LL17J10, LL17J24).
2. Always make sure the power is off before proceeding with assembling, disassembling, relocating, servicing or cleaning.
3. Do not use this product for any purpose other than its intended use.
4. Make sure all electrical connections conform to the National Electrical Code and all applicable local regulations.
5. Do not let power supply cords touch hot surfaces.
6. Do not mount near gas, electric heaters or air outlets.
7. The LED light with battery backup contains a sealed, non-maintenance Li-ion battery pack of 7.2V 2600mAh that is not field replaceable and the charging time for a full discharge time is 24 hours.
8. The electrical appliance for safety service is not a user serviceable item and shall only be replaced by the manufacturer service agent or a qualified person.
9. The replacement of the whole luminaire is needed when the rated duration of operation cannot meet after the corresponding recharge period.
10. Use this product in -40°C minimum, 50°C maximum ambient temperatures (Ta).
11. The maximum length of interchange cables that limits the voltage drop to 3%.
12. This product must be installed in accordance with the applicable installation code by a qualified service person familiar with the construction and operation of the product and the hazards involved.
13. The luminaire should be mounted in locations and at heights where it will not be readily tampered by unauthorized personnel.
14. Ensure product compatibility before final installation. Wiring should be strictly in accordance with the wiring diagram, wiring errors will damage the product. A case of safety accident or product failure caused by users' illegal operation does not belong to the scope of customer complaint acceptance, compensation or product quality assurance.

INSTALLATION INSTRUCTIONS

⚠ CAUTION - Before all the wiring and installation steps are complete, please make sure that the AC power is disconnected.

WIRING DIAGRAM



ELECTRIC CONNECTION

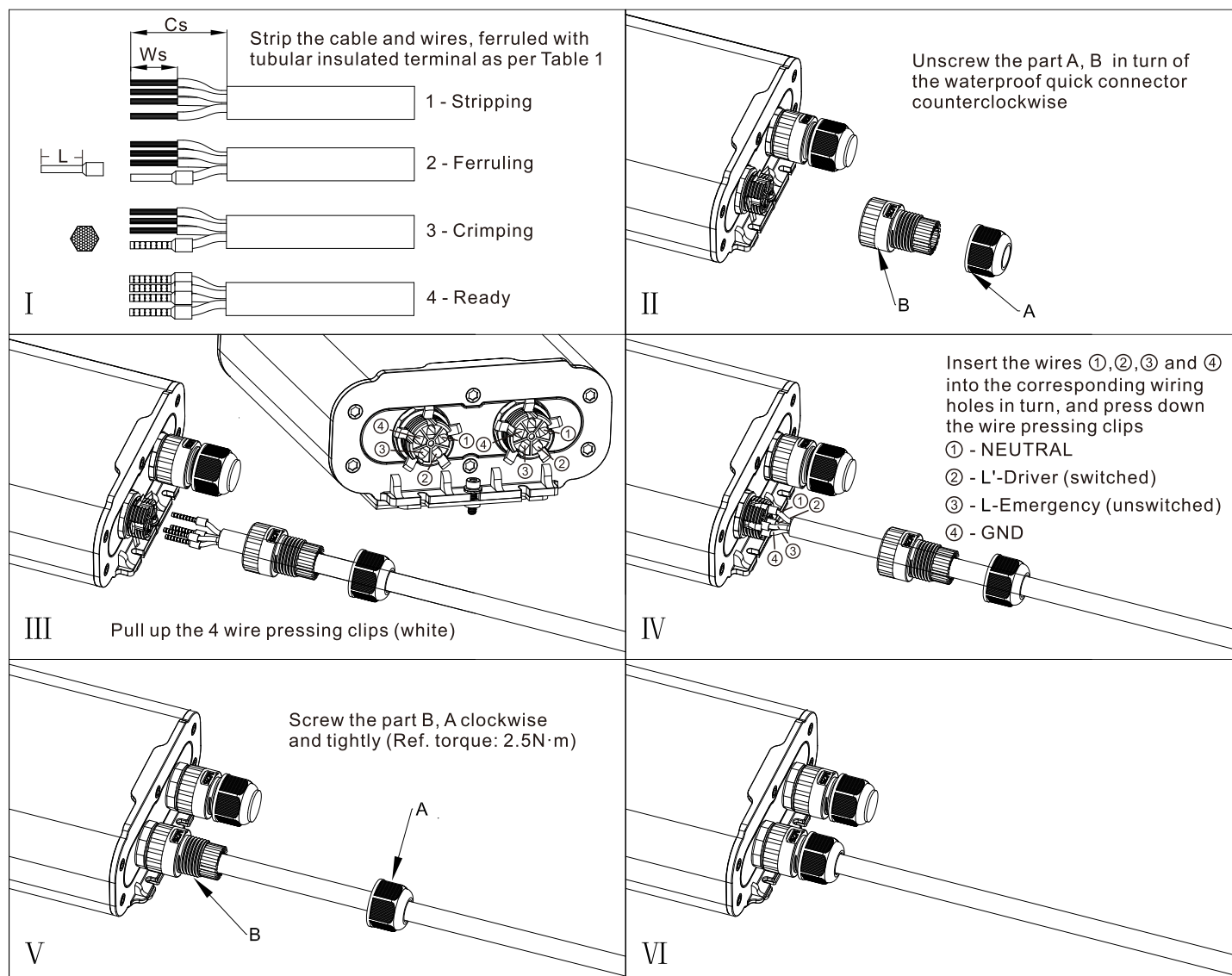
Use VDE or UL approved power cable with the outer diameter from 9mm to 14mm.

Use wire with 1.0-2.5mm² or 14-17AWG for electric connection.

After connection, the conductors shall not be exposed.

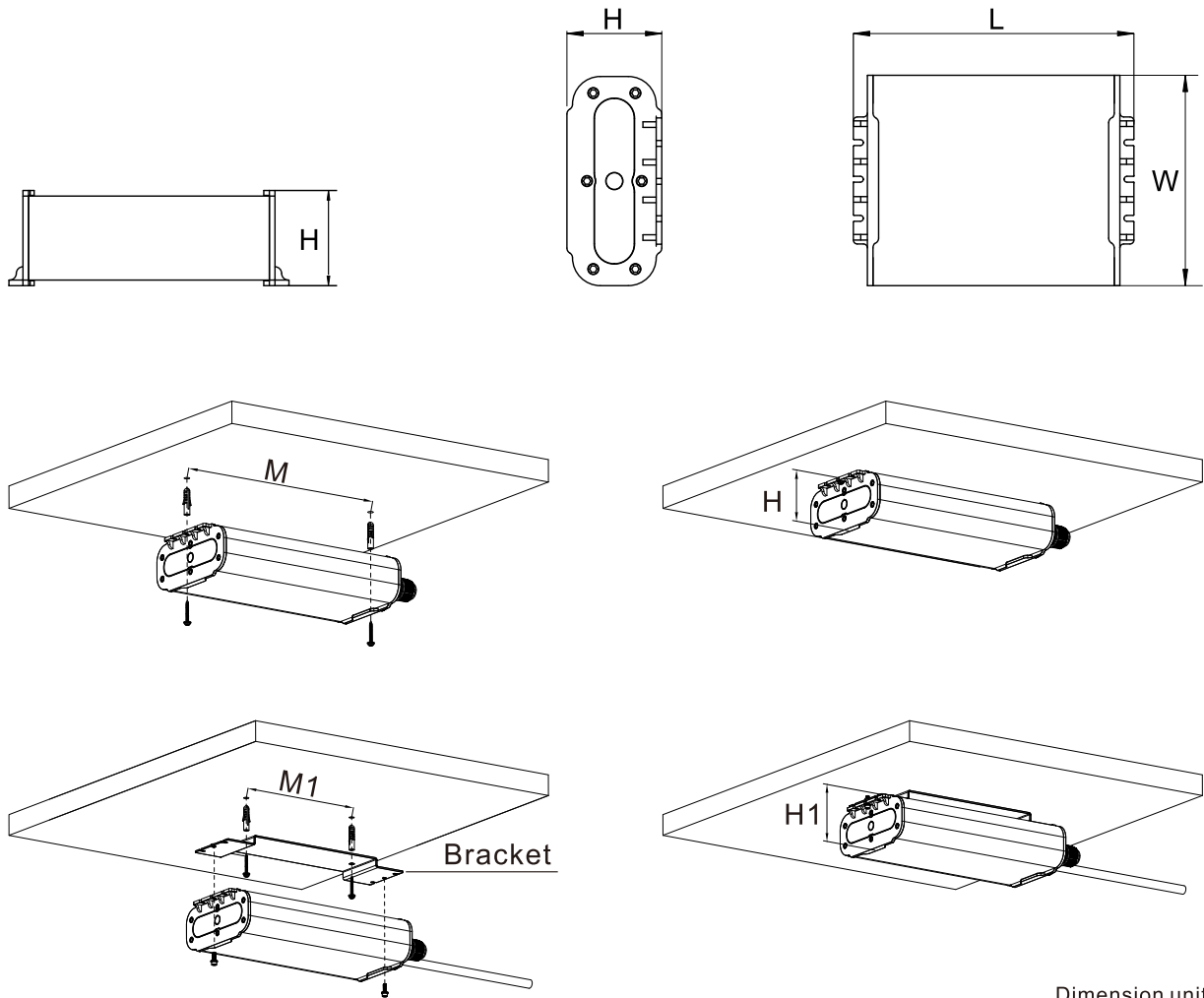
TABLE 1

Wire diameter	Wire type	Cable stripping length (Cs)	Wire stripping length (Ws)	Tubular insulated ferrule
2.5mm ² (14AWG)	Flexible	33-35mm	17-18mm	L=15mm, hexagonal
2.5mm ² (14AWG)	Solid	33-35mm	17-18mm	-
1.5mm ² (16AWG)	Flexible	33-35mm	15-16mm	L=12mm, hexagonal
1.5mm ² (16AWG)	Solid	33-35mm	15-16mm	-
1.0mm ² (17AWG)	Flexible	33-35mm	15-16mm	L=12mm, hexagonal
1.0mm ² (17AWG)	Solid	33-35mm	15-16mm	-



INSTALLATION INSTRUCTIONS

SIZE AND MOUNTING

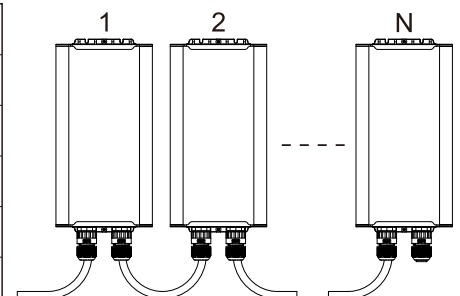


Dimension unit: mm
Tolerance: ± 1

Model	Voltage	Power	Frequency	L	W	H	H1	M	M1	Normal Lumen output	Emergency Lumen output (>90 Minute)	Light Angle
LL17H08	100-277V	8W	50/60Hz	200	150	69	83	190	100	900Lm		110°
LL17H22	100-277V	22W	50/60Hz	300	150	69	83	290	180	3000Lm		
LL17J10	100-277V	20W	50/60Hz	200	150	69	83	190	100	900Lm	900Lm	
LL17J24	100-277V	33W	50/60Hz	300	150	69	83	290	180	3000Lm	1000Lm	

$N_{Max.}$ = LINKABLE QUANTITY (PCS)

Item	Input Nmax.	4x1.0mm ² ~4x2.5mm ²			
		100V AC	120V AC	230V AC	277V AC
LL17H08		100	110	200	220
LL17H22		35	40	75	80
LL17J10		40	45	80	85
LL17J24		25	25	50	50



Please find following proper operation and testing procedures for the LED light with battery backup.

OPERATION

When the AC power is switched on, the lighting is in the normal mode and powered by the mains power.

Through the wall switch, you can control the lighting's ON and OFF. The LED test switch (LTS) is illuminated at one of following two states: One is slow blinking, indicating that the battery is being charged; the other is long bright, indicating that the battery has been fully charged.

In case of AC power failure, the lighting will switch to emergency mode automatically. At this time, the lighting will be powered by the battery, and the LTS is OFF. When the AC power is restored, the lighting will switch back to normal mode automatically and resume charging the battery.

MANUAL TEST

In the normal mode, we can make following manual tests by LTS:

1. Press the LTS once to force a ten-second emergency test. After ten seconds, the lighting will return to its normal mode automatically.
2. Press the LTS twice continuously within 3 seconds to force a 60-second monthly test. After 60 seconds, the lighting will return to its normal mode automatically.
3. When the battery is fully charged, press the LTS 3 times continuously within 3 seconds to force a 90-minute annual test. After 90 minutes, the lighting will return to its normal mode automatically.

When the lighting is in test mode, the LTS will be in a gradual changing (breathing) state.

During any manual test, press and hold the LTS for over 3 seconds to terminate the manual test.

Please note: Before performing a short emergency manual test, charge the battery for at least one hour.

Before performing a long term emergency test (e.g. a 90-minute annual test), charge the battery for 24 hours.

The charging time for a full discharge is 24 hours.

AUTO TEST

The Auto Test feature enables the lighting to conduct the initial test, monthly test and annual test automatically.

Initial Test - When the lighting is connected properly and powered on, it will perform an initial Auto Test immediately to check if the battery is well connected.

Monthly Test - The first monthly Auto Test will be performed at 24 hours to 7 days after Initial power on. After that, the monthly Auto Test will be executed every 30 days.

Annual Test - The annual Auto Test will be performed every 52 weeks after first powered on.

LED TEST SWITCH (LTS) CONDITIONS

LTS Slow Blinking: Normal Charging

LTS Long Bright: Battery Fully Charged - Normal Mode

LTS Off: Power Failure

LTS Gradual Change: In Testing Mode

LTS Quick Blinking: Abnormal Condition - Corrective Action Required